



Gallery Driver Version 5.0.00

Release Notes

Rev GBS-20121227

Table of Contents

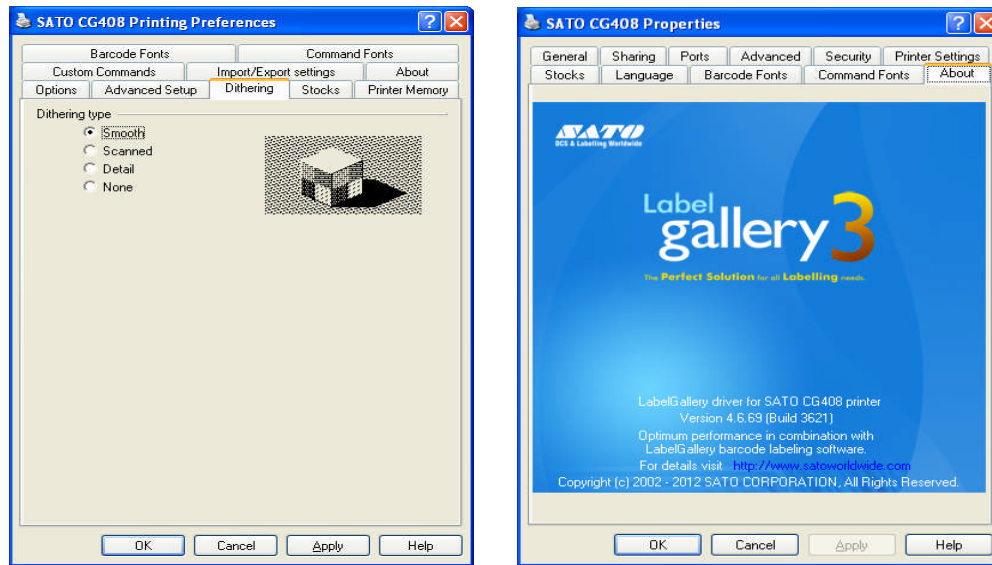
What is New in General	3
Dithering Default Setting.....	3
Status Monitor.....	5
Label Template Export To Legacy	6
Improvements	7

What is New in General

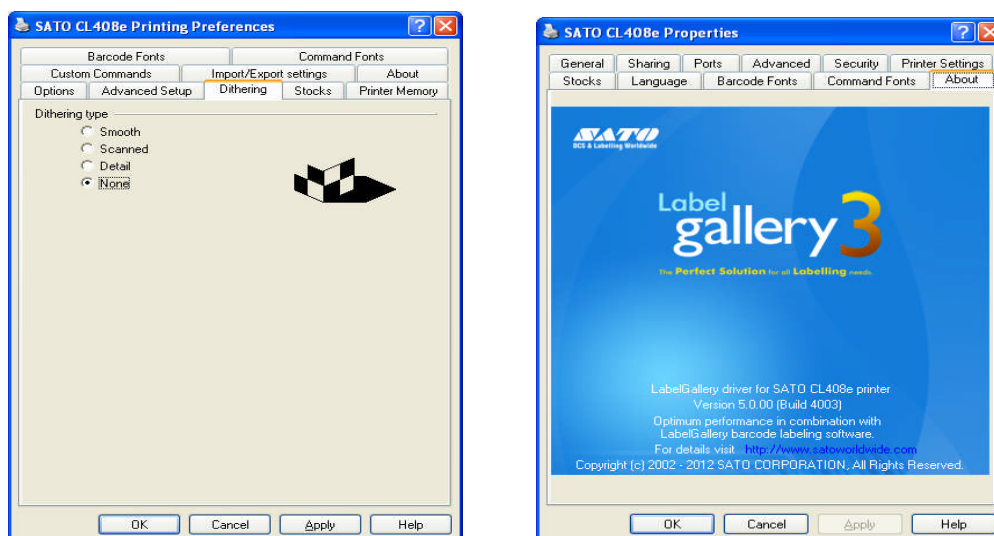
Dithering Default Setting

In SATO printer driver properties, in Dithering tab, it has set to “None” in latest driver version 5.0.00.

In driver version 4.6.69 and below, Dithering was set to “**Smooth**” by default.



Driver version 5.0.00 has changed Dithering type to “**None**” by default.



Printer driver settings will be changed while updating existing earlier version of printer drivers and it depends the update method.

If you are updating installed driver using Windows Update or Windows Add Printer Wizard, existing driver setting will be preserved. For this case, Dithering setting will be remained as “Smooth” unless you have changed before updating the driver.

If you are using printer installer in the GalleryDriver distribution package (prninst.exe) for updating installed driver, driver settings will be overwritten with new default settings unless you have changed driver settings before updating the driver.

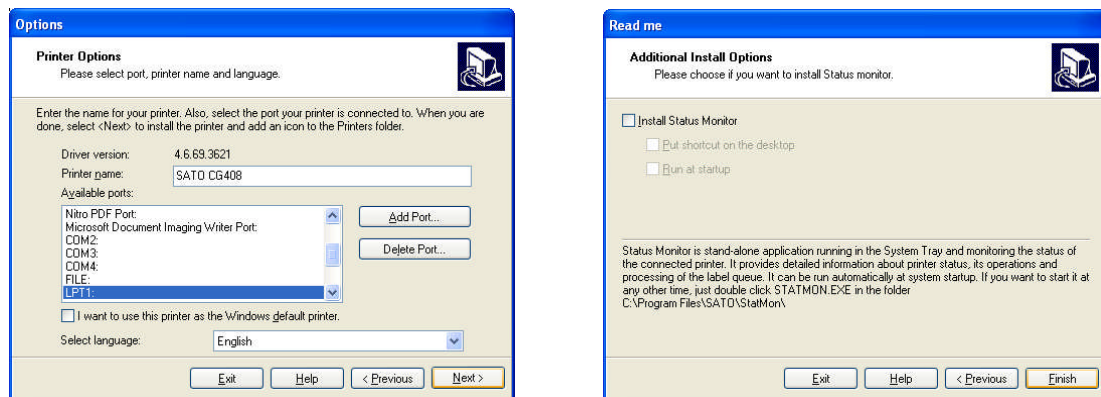
Updating Method	Driver with default settings	Driver with modified settings
Windows Update	Preserve Settings	Preserve Settings
Windows Add Printer Wizard (Add a printer menu in Devices and Printers)	Preserve Settings	Preserve Settings
GalleryDriver Printer Installer (prninst.exe)	New Default Settings	Preserve Settings

Status Monitor

The option to install Status monitor has removed from latest driver version 5.0.00.

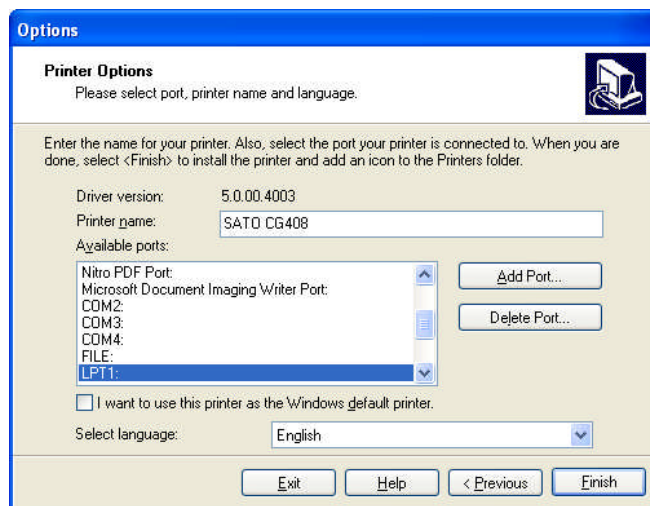
Before

User has an option to “Install Status Monitor” when driver installation is completed.



After

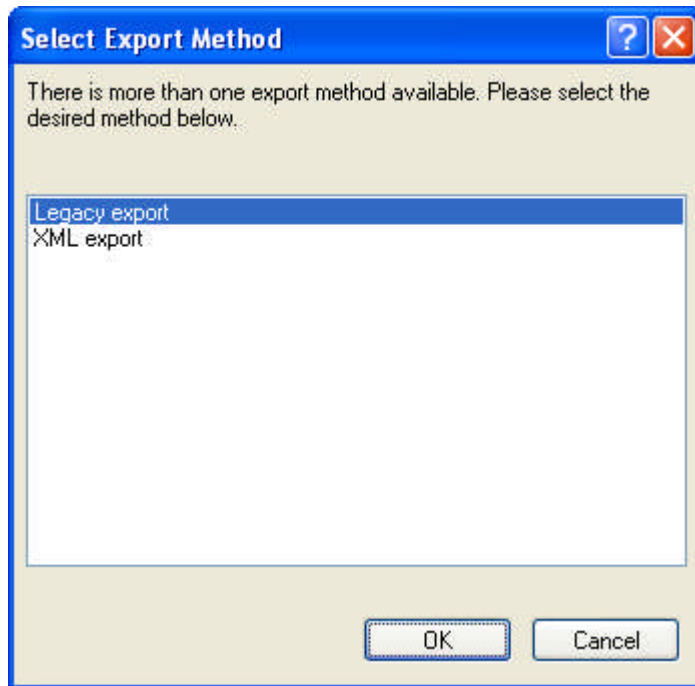
No more optional of status monitor was prompt for installation.



Label Template Export To Legacy

All enhanced printer drivers have added label size, offset and proportional pitch commands (A1, A3 and PS) when user has “Export to printer” or “Store” label template to the printer.

The command “/Y” has removed when doing legacy export from Label Gallery software.



Improvements

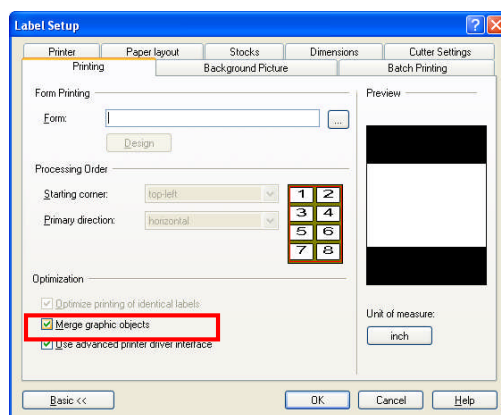
There are improvements implemented in GalleryDriver in due to some constraints and functions that have encountered issue.

Below are the fixes from GalleryDriver version 4.6.69 to 5.0.00.

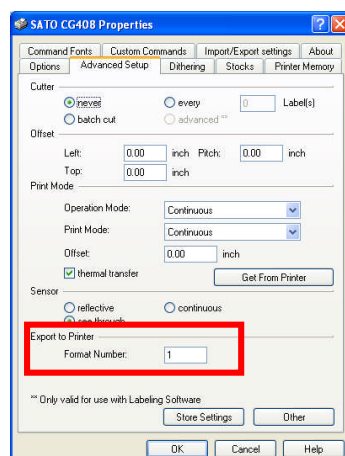
General Improvement

1. Removed <EX>, <A> and <AR> command from HR series driver.
2. Corrected the problem that GT4e series printer does not response while printing over USB when a large stream is sent to the driver over the Status 3 and 4 protocols.
3. Added Outline fonts (Vector font) in GL4e series printer driver.
4. Corrected the problem that store procedure failed to store graphics data in CG4 printer.

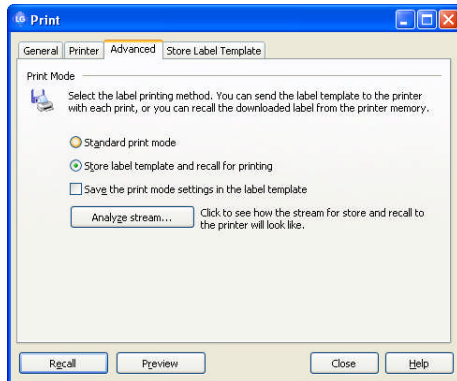
- a. During Label Setup of CG4 printer, click “Printing” Tab and check “Merge graphic objects” and click “OK”.



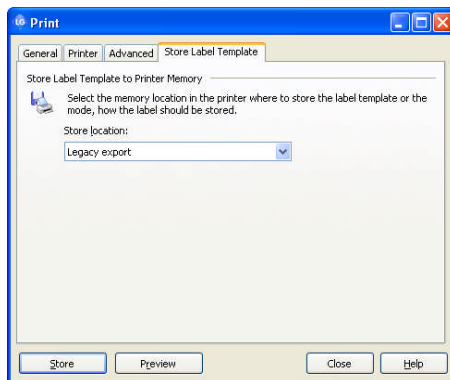
- b. In label template, go printer properties and “Advanced Setup” Tab. Input Format number and click “OK”.



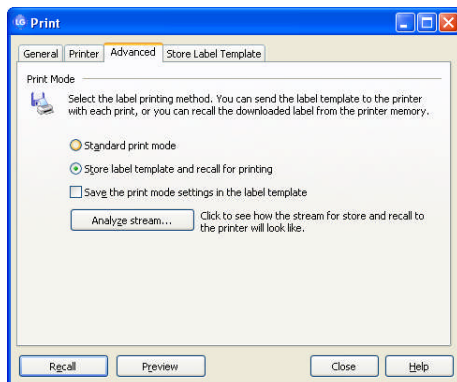
c. Click “File” to print and go “Advanced Tab”. Select “Store label template” and recall for printing. You can click “Analyze stream” to check the SBPL command.



d. Click “Store Label Template” Tab and select “Legacy export” and click “Store” during printer online.



e. Click “Advanced” Tab and click “Recall” for printing.



5. Corrected the status switching problem from Status 5 to Status 4 for GT4e and GL4e series printer driver.
6. Removed overlay function from CT424i printer driver.
7. Removed the “Transmissive sensor 2” setting from CG4 series printer driver.
8. Corrected the USB Plug&Play ID for LT408 printer.